

2024

FIELD DATA SOLUTIONS

# REAL-TIME SOUND MONITORING

QUALIFICATIONS STATEMENT



Field Data  
SOLUTIONS



FIELD ENVIRONMENTAL  
INSTRUMENTS, INC.

# FDS CONNECT®



## Access to Real-time Data

- Secure data storage and management
- Visualized data through charts and graphs
- Export data to Microsoft Excel
- Aerial overview with GPS-positioned instrument location



## Real-time Alerts & Alarms

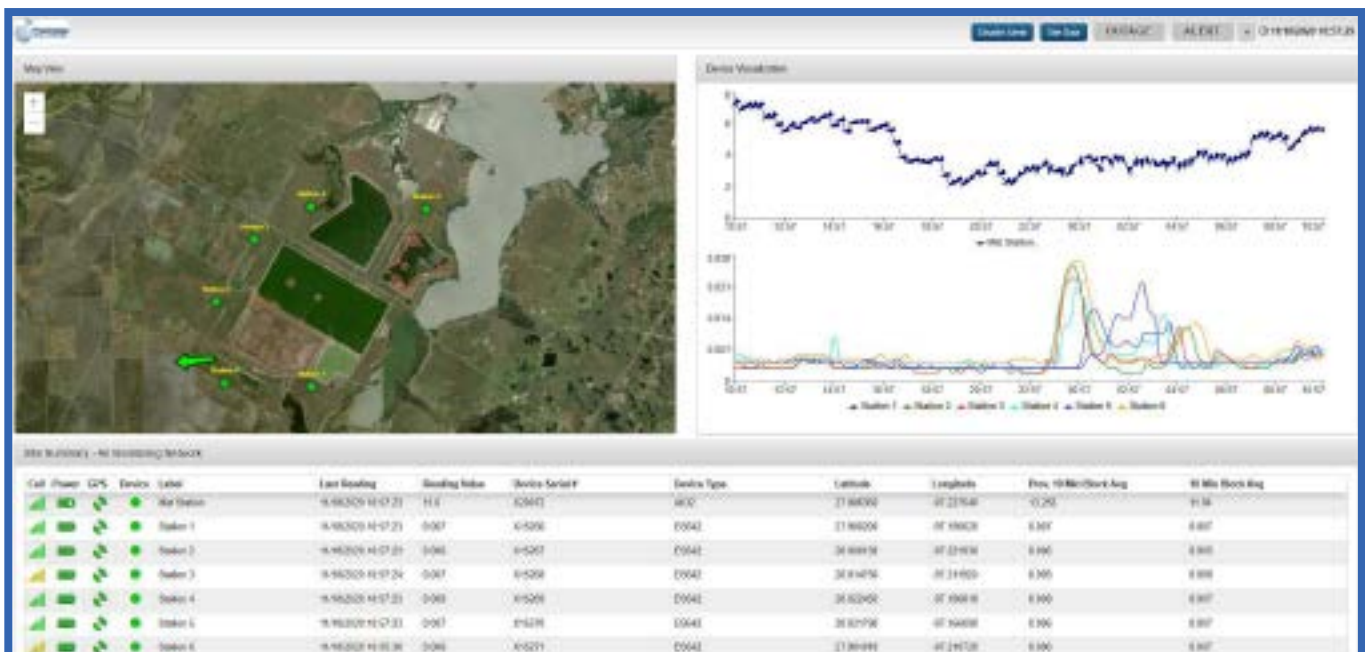
- SMS notifications sent directly to a phone or email
- Set reading thresholds for alerts and alarms to quickly respond to changes in the field
- View the status of each instrument within the user interface



## Web-based Platform

- Cross-brand compatibility with multiple devices
- No software installation
- Accessible from anywhere with internet access
- Share data with multiple team members

FDS Connect Web User Interface



# SOUND MONITORING IN REAL-TIME WITH FDS CONNECT®

## CASELLA CEL-63X

- 140dB measurement range
- Real-time 1/3 octave measurements
- Used for boundary noise assessments and noise nuisance complaints
- Conforms to international measurement standards
- Preconfigured noise profiles available on the device



## CASELLA ENVIRONMENTAL KIT

- For use with the Casella CEL sound monitoring instrument
- Waterproof microphone cable
- Mic wind and rain protection
- Weatherproof enclosure case for instrument and battery
- Internal power for 10 days on a rechargeable battery
- Heavy duty tripod



Alerts



Data



Instrument data and alerts sent to FDS Connect® web-based user interface via secure cellular connection

# TONAWANDA, NY COKE PLANT DEMOLITION 2021





## Demolished Tonawanda Coke Plant Smokestack



View of the FDS Connect® web platform during demolition

- FDS Connect® was used for real-time sound monitoring during the demolition of the plant
- Set up multiple monitoring stations around the perimeter of the site, receiving the data from them simultaneously
- Data was viewed on the web during the demolition process through a cellular connection
- Sound was monitored to make sure the demolition didn't exceed unsafe noise levels outside the site

# DEPLOYMENTS



Trax Farms, PA 2015



Dilles Bottom, OH 2017

# DEPLOYMENTS



Etna, MN 2023



Tonawanda, NY 2021

# EQUIPMENT RENTAL

## Rental Rates

- Fairest rates in the industry
- Flexible rental terms, real-time rentals
- Rental period **STARTS** the day after you receive the equipment (except for morning deliveries)
- Rental period **ENDS** the business day before FEI receives the equipment; for **LOCAL PICKUP**, the rental period ends the day you call

## Delivery

- **FREE** local delivery and pick-up of equipment
- Equipment arrives the day before rental starts
- Items shipped worldwide via FedEx or UPS

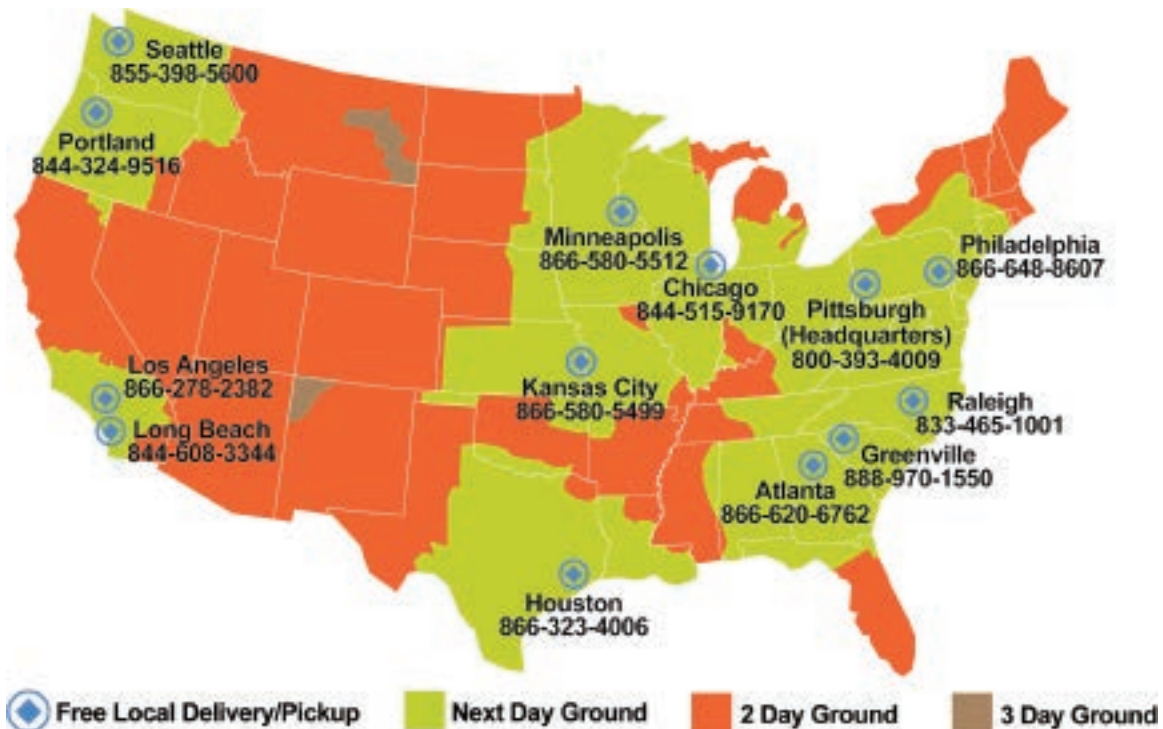
## Equipment

- No calibration or maintenance fees
- Instruments serviced and calibrated to manufacturers' specifications

## Support

- 24/7 technical support
- Cleaning, calibrating, and servicing the industry's most popular equipment

## Are you in the **GREEN ZONE**?



Next day ground delivery available in certain regions



**FIELD ENVIRONMENTAL  
INSTRUMENTS, INC.**